



# Application Rates

## ZeoSand—Filter Media for Sand Replacement

**Zeolites greatly improve performance of sand filters without added work. Follow these step-by-step instructions to fill sand filters with ZeoSand, or to refresh ZeoSand's ammonium trapping capacity.**

### Greater Surface Area Traps Smaller Particles

ZeoSand is a high purity natural zeolite. The surface area of ZeoSand is 100 times greater than sand thus allowing smaller particles to be trapped. ZeoSand's larger surface area greatly improves water clarity and increases the time between backwashes.

ZeoSand traps and holds ammonium ions (sand does neither). Less ammonia means fewer eye-burning chloramines and reduces the need for chemical shocks (lowering chemical expenses). The ammonia trapping qualities may require regeneration.

ZeoSand functioning under normal conditions needs to be replaced about as often as sand. After filter use, ZeoSand may be added to your garden or potted plants as a soil conditioner or simply discarded as a non-hazardous waste.

## ZeoSand Application Rates

### Sand Replacement

25 to 30 lbs of ZeoSand replaces 50 lbs of sand

### Quantity of ZeoSand in Sand Filter

For filters less than 500 lbs, replace sand with 50% of ZeoSand  
Filters 500 lbs and larger require a 60% replacement ratio

#### For example:

300-lb filter requires 50%, or 150 lbs, of ZeoSand

A 500-lb filter requires 60%, or 300 lbs, of ZeoSand

### Filling Sand Filters with ZeoSand

1. Determine the amount of media required for your filter based on ZeoSand replacement ratios
2. Empty filter and make any needed repairs
3. Fill filter half-way with water
4. Slowly pour ZeoSand into filter allowing all media granules to be moistened. Make sure no media enters lateral piping assembly.
5. Close filter and backwash until backwash water is clear.
6. Allow ZeoSand to settle for 5 minutes
7. Backwash for an additional 2 minutes

### Frequency of Replacement

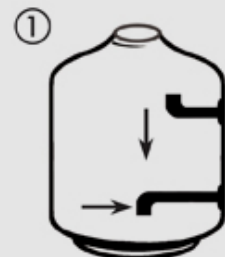
Replace as frequently as sand

### Refreshing ZeoSand's Ammonium Trapping

1. Drain filter
2. Refill with 10% salt water solution (any type of salt will work)
3. Let stand for minimum of 2 hours
4. Backwash to waste

### Filling Sand Filters

Follow these instructions to fill sand filters with ZeoSand. Other important details are listed in the ZeoSand Application Rates chart (at left).



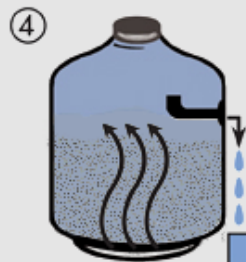
Empty filter and make any needed repairs.



Fill filter half-way with water.



Slowly pour ZeoSand into filter.



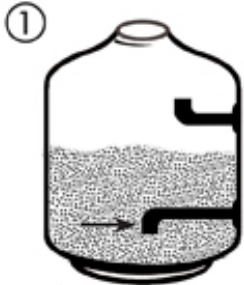
Close filter and backwash until backwash water is clear.



# Refreshing

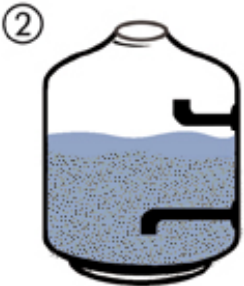
## Refreshing ZeoSand

Renew filtration efficiency and refresh ZeoSand's chloramine control with a salt water rinse. ZeoSand will need to be refreshed when the chloramine odor (combined chlorine) begins to increase. Typically, the home pool needs to be refreshed every two years. Commercial pools, due to the increased bather load, must be refreshed more often.



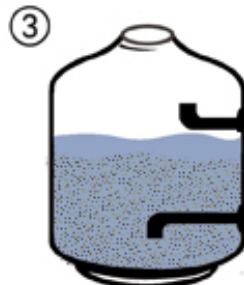
### Step 1

- Turn filter off
- Drain filter



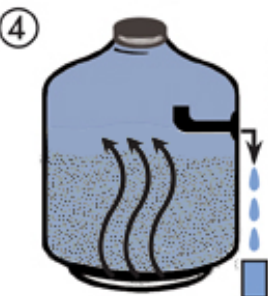
### Step 2

- Replace the drain plug
- Refill with a 10% salt water solution (any type of salt will work)
- Use approximately 0.8 lb. of salt per gallon of water
- Add salt water solution until media is covered



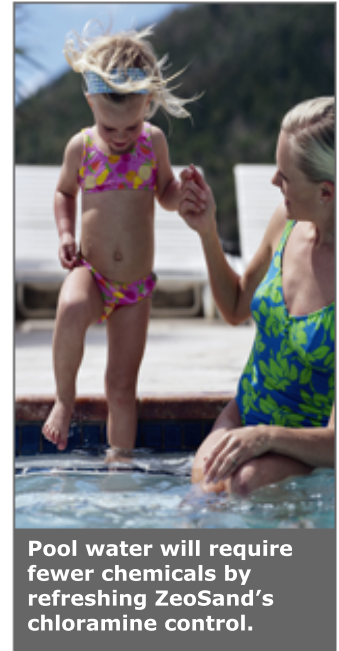
### Step 3

- Let stand minimum of 2 hours



### Step 4

- Backwash to waste to clean filter media of all salt solution
- Turn on filter



Pool water will require fewer chemicals by refreshing ZeoSand's chloramine control.

### ZeoSand Benefits

- Superior Water Clarity
- Improves Sand-Filter Performance
- Removes Eye-Burning Chloramines
- Easy to Use
- Saves Water and Energy
- Reduces Chemical Usage
- Natural and Environmentally Safe

[See Properties](#) ↗



# ZeoSand FAQs

## Frequently Asked Questions

Review our FAQs below, or for additional product information see [Printable Files](#).

### What is ZeoSand® ?

ZeoSand is a 100% natural zeolite replacement for a sand filter that gives DE-like clarity and controls chloramine formation.

### How much ZeoSand is used in a sand filter?

Fill the sand filter with ZeoSand to the level recommended by the filter manufacturer. For more information see the [ZeoSand Application Rates Chart](#).

### How do you fill a sand filter with ZeoSand?

#### Step 1

- Determine the amount of media required for your filter based on the ZeoSand replacement ratio.
- Empty filter and make any needed repairs.

#### Step 2

- Fill filter half-way with water.

#### Step 3

- Slowly pour ZeoSand into filter allowing all media granules to be thoroughly wetted.
- Make sure no media enters lateral piping assembly.

#### Step 4

- Close filter and backwash until backwash water is clear.
- Allow ZeoSand to settle for 5 minutes.
- Backwash for an additional 2 minutes.
- Turn filter on.

### How long does ZeoSand last?

ZeoSand lasts approximately as long as sand.

### How is less ZeoSand used when the filter is filled to the same level as sand?

Although the sand filter is filled with ZeoSand to the same level as sand, you use less ZeoSand (by weight) than sand. This is because the bulk density of ZeoSand is less than that of sand. Bulk density includes the air space within the structure of the particles as well as the airspace between the particles. The zeolite's unique honeycomb-like structure creates air chambers making it less dense and giving it exceptional filtering capabilities.

Thus it takes less zeolite by weight to fill a filter, and twenty-five pounds of zeolite does the work of fifty pounds of sand.

### What is bulk density?

Bulk density is essentially the weight of specified quantity of material divided by the volume occupied by that material. Because sand grains are denser than zeolite grains, a unit volume of sand weighs more than the same volume of zeolite. That's why it takes less zeolite by weight to fill a filter.



### Why does ZeoSand give DE-like clarity?

A cubic foot of ZeoSand has about 100 times the surface area as a cubic foot of sand. The small dirt particles are trapped by the rough surface of ZeoSand. Sand is smooth and does not trap the small particles.

### How soon will ZeoSand improve the pool water clarity?

Within 24 hours the clarity improvement will be seen. After about four days the DE-like clarity will be achieved.

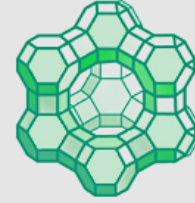
### How does ZeoSand control chloramines?

ZeoSand acts like a water softener to trap ammonium ions from the pool water. With less ammonia in the water, the eye-burning chloramines are reduced. Depending upon the number of swimmers, the ZeoSand will reduce chloramines for about two years.

### Can the chloramine control be renewed?

Yes. Like any water softening resin, the ZeoSand ammonium trapping can be renewed with a saltwater rinse. Drain the filter, fill with a 10% salt solution, and let stand for at least two hours. Then, backwash to waste. For additional details see [Refreshing](#).

### Zeolite Structure

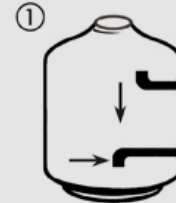


Zeolites's unique three-dimensional-honeycomb structure makes it an effective filter media.

[More on Zeolites](#) →

### Filling Sand Filters

Follow these instructions to fill sand filters with ZeoSand. Other important details are listed in the [ZeoSand Application Rates chart](#) (at left).



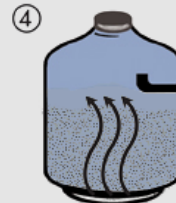
Empty filter and make any needed repairs.



Fill filter half-way with water.



Slowly pour ZeoSand into filter.



Close filter and backwash until backwash water is clear.