

832059

# LIGHT FIXTURE # 9080

**InnovaPlas**  
The pool Step Company

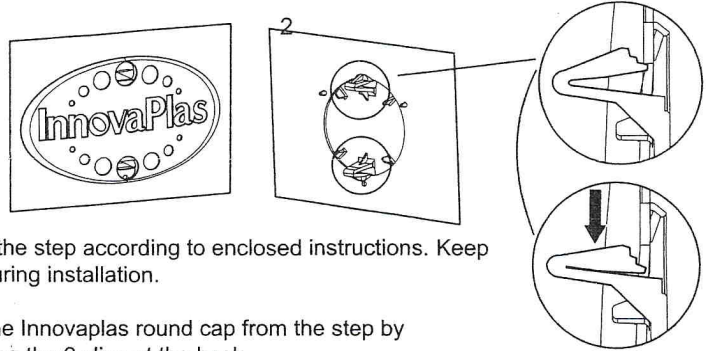
## ⚠ WARNING

- ◆ Risk of drowning by entanglement; secure the power cord with tie wrap supplied as per instructions.

## TABLE OF CONTENTS

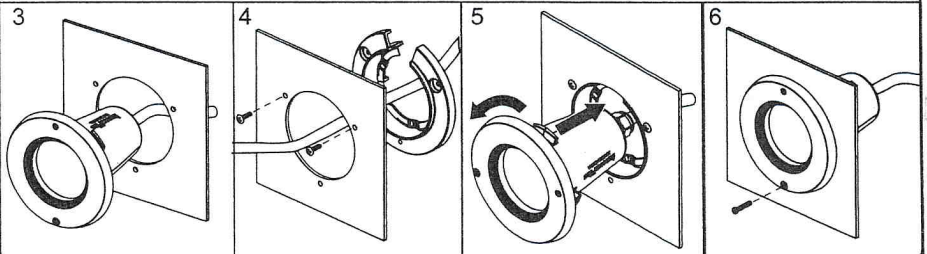
- A) Light installation on the step.
- B) Deck installation.
- C) Step combo Installation
- E) Winter storage & used battery disposal.

## A LIGHT INSTALLATION ON THE STEP

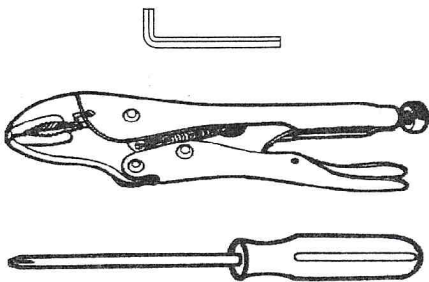


- 1) Assemble the step according to enclosed instructions. Keep step dry during installation.
- 2) Remove the Innovaplas round cap from the step by compressing the 2 clips at the back.
- 3) Insert the lighting fixture from the outside of the step.
- 4) Pass mounting ring through front of hole and fasten using the 2 screws provided.
- 5) Insert light fixture by aligning the ring and turning 1/4 turn towards left.
- 6) Apply locking screw. Plug it in.

**IMPORTANT:** Use supplied tie-wraps to attach electric cord to a post as shown. Do not submerge the battery pack, the product could be damaged.



## TOOLS REQUIRED (Not Included)

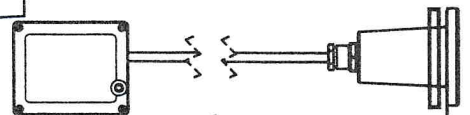
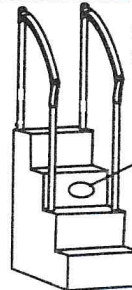


## REQUIRED FOR SKU # 9080

Battery not included  
X4



COMPATIBLE WITH ANY INNOVAPLAS STEP CONTAINING THE INNOVAPLAS CREST ROUNDEL



**InnovaPlas**  
The pool Step Company

**LIMITED WARRANTY**

**MANUFACTURER WARRANTY**

30 days on manufacturing defects.  
Replacement only.