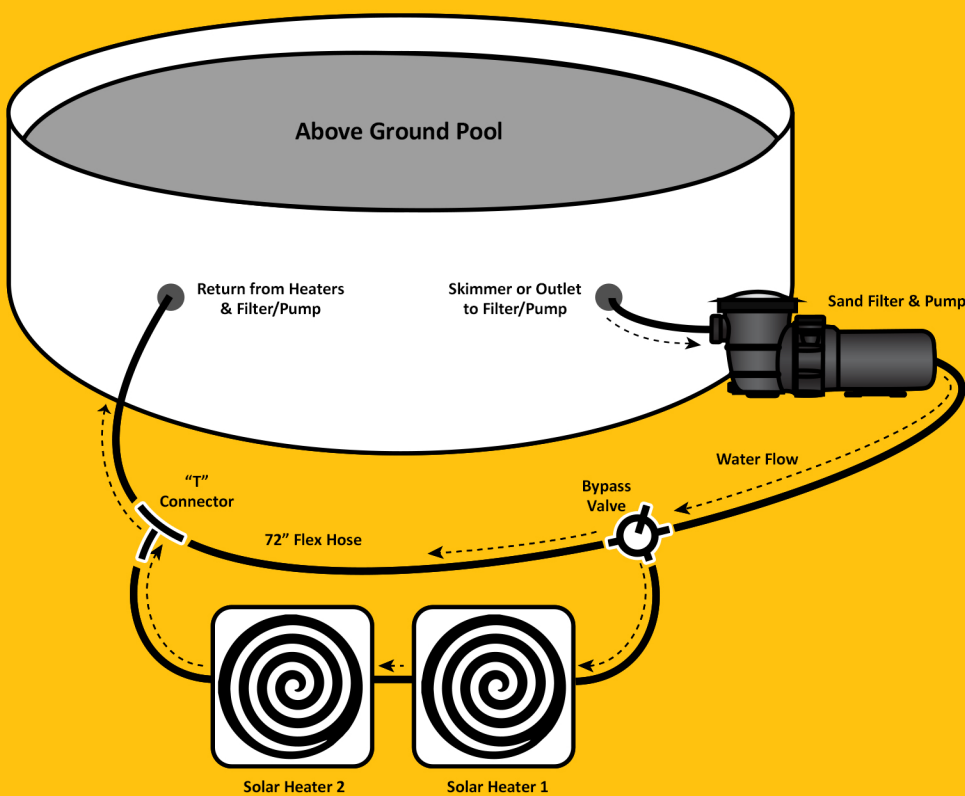




SOLAR HEATER BYPASS KIT

for Connecting Multiple Units



INSTRUCTIONS

- 1 Turn off filter/pump then block off water from the pool at filter/pump and pool return connections.
- 2 Disconnect pool return hose from the filter/pump.

- 3 To install bypass kit:
 - a. Apply Teflon tape to the threading and then thread bypass fittings into the bypass valve.
 - b. Connect solar heaters as shown in figure using included hoses and hose clamps.

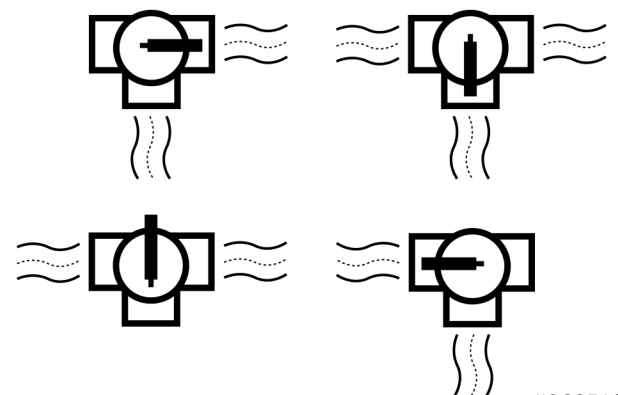
Hint: Using caution, dip ends of flex hose in hot water (not boiling) to help fit "T" connector.

- 4 Unlock water and turn on filter/pump.
- 5 Adjust bypass valve as needed to achieve desired flow.

Bypass Kit Includes

- 1 - Bypass Valve
- 1 - "T" Connector
- 3 - 1 ¼" / 1 ½" Threaded Bypass Fittings
- 1 - 1 ½" x 72" Flex Hose
- 6 - Stainless Steel Hose Clamps
- 1 - Teflon Tape

Bypass Valve Control



#902518A