



SKU# 230015, 230018

# A-FRAME POOL LADDER FOR ABOVE GROUND POOLS

## INSTRUCTION MANUAL



230015: 48" Pools

230018: 52" Pools



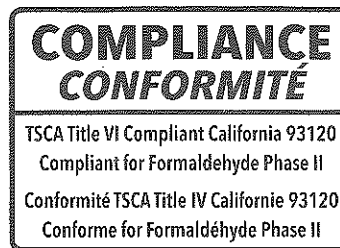
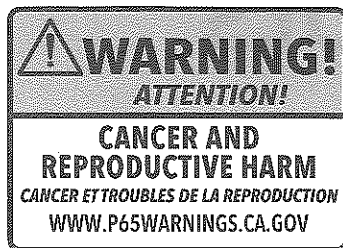
# THANK YOU!

Thank you for purchasing this product. We work around the clock and around the globe to ensure that our products maintain the highest possible quality.

Please read the warranty information at the back of these assembly instructions for further details.

## SAFETY INFORMATION

Please read this entire manual before attempting to assemble, operate or install the product. Keep this manual for later reference.



**ASSEMBLY TIME:** FOR ONE PERSON, ASSEMBLY TIME IS APPROXIMATELY 45 MINUTES.  
**TOOLS REQUIRED:** A PHILLIPS HEAD SCREWDRIVER AND PLIERS ARE REQUIRED FOR ASSEMBLY.

# SAFETY INSTRUCTIONS & WARNINGS

## IMPORTANT!

READ ALL STEPS OF THIS MANUAL BEFORE INSATALLATION. SAVE THIS MANUAL FOR LATER REFERENCE.



## WARNING

DIVING OR JUMPING FROM LADDER MAY CAUSE PERMANENT INJURY OR DEATH.



## WARNING

REMOVE LADDER FROM POOL WHEN NOT IN USE TO PREVENT UNAUTHORIZED USE AND POSSIBLE DROWNING. DO NOT SWIM UNDER, THROUGH, OR BEHIND THIS LADDER TO AVOID ENTRAPMENT OR DROWNING.



## WARNING

USE ONLY UNDER COMPETENT SUPERVISION. NEVER LEAVE YOUNG CHILDREN UNATTENDED.



## WARNING

CHOKING HAZARD! SMALL PARTS ARE NOT FOR CHILDREN UNDER 3 YEARS OF AGE.



## WARNING

POOL FENCING LAWS AFFECTS THIS PRODUCT, CONSULT YOUR LOCAL COUNCIL. COMPETENT SUPERVISION NEEDED. DROWNING HAZARD PRESENT, EVEN IN SHALLOW WATER.



## CAUTION

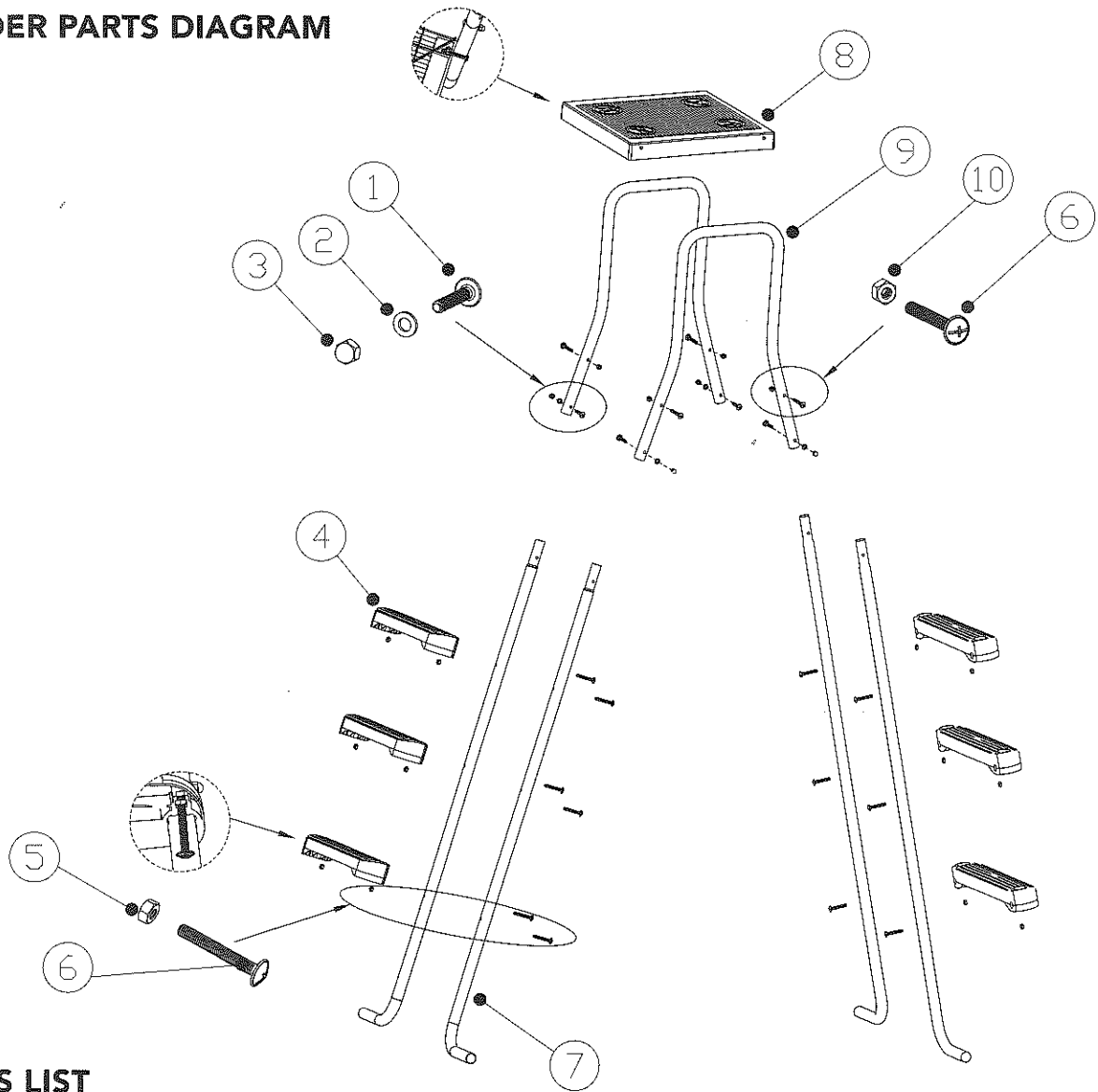
This product is not intended for use by anyone (including children) with restricted physical, sensory, or mental ability, or with limited experience and / or limited knowledge, unless they are supervised by someone responsible for their safety, or they receive instruction from them regarding the use of the product. Please read the following safety instructions. They are key to ensure proper use and safety of the consumer.

### **YOU ARE THE MOST IMPORTANT SAFETY COMPONENT OF YOUR POOL. YOU MUST ENSURE CHILDREN AND ADULTS USE THIS LADDER SAFELY!**

- Do not jump off this step.
- Place the ladder on a level, fixed surface.
- Ensure the ladder is standing in a stable, secure manner.
- Maximum weight is 305kg / 672-lbs, and corresponds to the ANSI/APSP/ICC-4 standard.
- Failure to observe these safety instructions can cause injury.
- These product warnings cannot contain all safety guidelines associated with the product. They only show the general risks, and do not cover all possible dangers and risks.
- Before using the ladder, check that the removable steps are firmly and safely attached.
- Check all nuts and bolts regularly.
- Store the ladder in a safe place when not in use.
- Remove the removable steps, when the pool is not in use.
- Store the removable steps in a safe place, out of reach of children.
- One person on the ladder/stair at a time.
- This ladder is designed and manufactured for a specific pool wall height and/or deck of the pool.
- For entry/exit of pool, face the ladder at all times.
- Users shall use artificial lighting during nighttime pool use, to illuminate all safety signs, ladders, steps, deck surfaces, and walks.

# PARTS LIST & DIAGRAM

## LADDER PARTS DIAGRAM

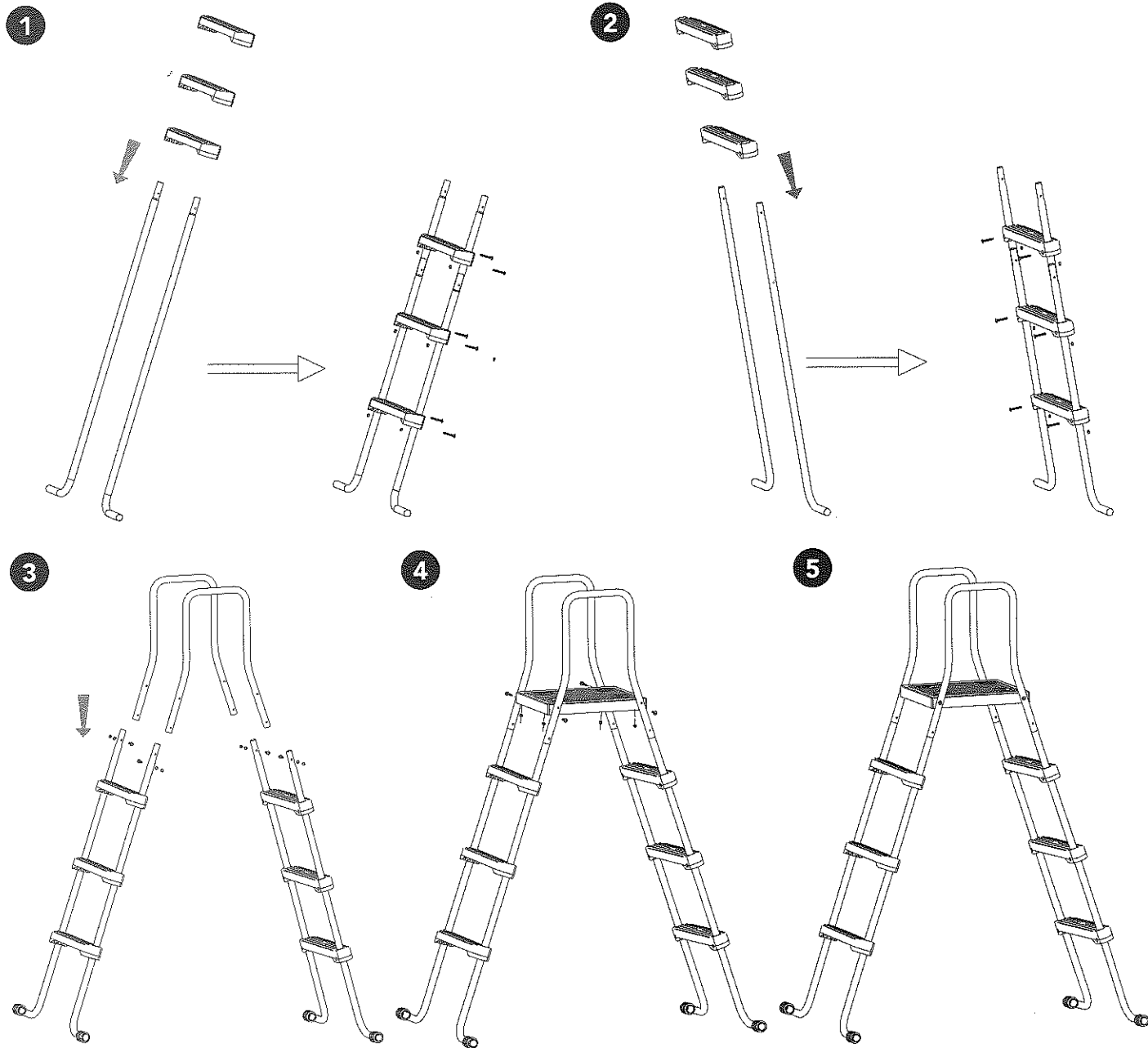


## PARTS LIST

#	Part Description	BB No.	MFG No.	230015 (48") QTY.	230018 (52") QTY.
1	M6 X 30 Bolt	NEP20245	LD21001	4	4
2	M6 Washer	NEP20246	LD21002	4	4
3	M6 Nut with Cap	NEP20247	LD21003	4	4
4	Step	NEP20248	LD21004	6	8
5	M6 Lock Nut	NEP20249	LD21005	12	16
6	M6 X 45 Bolt	NEP20250	LD21006	16	20
7	Leg	NEP20251	LD21007	4	4
8	Top Platform	NEP20252	LD21008	1	1
9	Handrail	NEP20253	LD21009	2	2
10	M6 Nut	NEP20254	LD21010	4	4

# ASSEMBLY INSTRUCTIONS

TO CARRY OUT THE CORRECT ASSEMBLY PROCESS, REFER TO THE STEPS BELOW (DIAGRAMS 1-5).



## LADDER STORAGE & WINTERIZATION

- Check that all parts are dry. Then store the ladder in a dry, safe place.
- Please ensure that all parts are stored out of reach of children.

## 90-DAY LIMITED WARRANTY

This product is warranted to the original purchaser to be free from defects in material or workmanship for a period of ninety (90) days from the date of the original retail purchase.

This warranty does not cover defects or damage due to improper installation, alteration, accident, or any other event beyond the control of the manufacturer. Defects or damage resulting from misuse, abuse, or negligence will void this warranty. This warranty does not cover scratching or damage that may result from normal usage.

This product is not intended for institutional or commercial use; the manufacturer does not assume any liability for such use. Institutional or commercial use will void this warranty.

This warranty is nontransferable and is expressly limited to the repair or replacement of the defective product. During the warranty period, the manufacturer shall repair or replace defective parts at no cost to the purchaser. Shipping charges and insurance are not covered and are the responsibility of the purchaser. Labor charges and related expenses for removal, installation, or replacement of the product or components are not covered under this warranty.

The manufacturer reserves the right to make substitutions to warranty claims if parts are unavailable or obsolete.

The manufacturer shall not be liable for loss of use of the product or other consequential or incidental costs, expenses, or damages incurred by the consumer of any other use. The user assumes all risk of injury resulting from the use of this product.

This warranty is expressly in lieu of all other warranties, expressed or implied, including warranties of merchantability or fitness for use to the extent permitted by Federal or state law. Neither the manufacturer nor any of its representatives assumes any other liability in connection with this product.

**All warranty claims must be made through the retailer where the product was originally purchased. A purchase receipt or other proof of date of purchase will be required to process all warranty claims. The model number and part numbers found within the assembly instructions will be required when submitting any parts requests or warranty claims.**