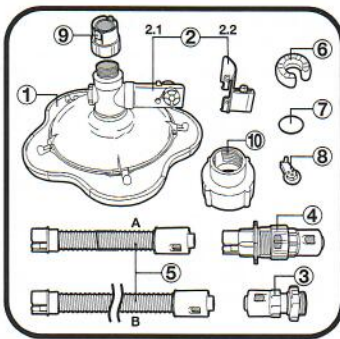


Zorba™

GB | Pressure Side Automatic Cleaner
 Universal, suitable for both in-ground and above ground pools. Excluding soft wall pools.

1. Zorba™ main body
2. Water jet nozzle — 2.1 Nozzle body
 — 2.2 Flap
3. Pool wall adaptor
4. Flow regulator
5. Hose section
6. Hose float
7. Return inlet cover
8. Wheel
9. Cleaner Hose Connector
10. Strainer connector



Zorba™ is an automatic pool cleaner that uses the water flow from the pool return inlet. A jet nozzle functions as a rudder to move the cleaner and drive it directionally. When the cleaner stops in front of a pool wall / obstacle, the jet nozzle will rotate, and the cleaner will move away from the pool wall / obstacle in another direction. A minimum 0.75HP (560W) pump is required to operate properly.



IMPORTANT FACTS

- Zorba™ is NOT a toy. Keep it out of reach of children.
- Always remove Zorba™ from the pool before you chemically shock your pool.
- Always remove Zorba™ when swimmers enter the pool.
- Always remove Zorba™ from the pool before cleaning or backwashing the pool filter.
- After cleaning or backwashing, let the filtration system run for at least 10 minutes before re-connecting the Zorba™.

Preparing your pool for Zorba™

- Backwash and clean your filter, skimmer baskets and pump basket regularly.
- Visually check for leaks on the return side plumbing from the filter to the pool wall.
- Repair any leaks before using Zorba™ in your pool.
- Close the main drain.
- Make sure the hoses supplied with Zorba™ are straight. If necessary, place the hoses under sunlight for a few hours.
- Close other return inlet(s) with the cover plate provided as shown below:



NOTICE

For aboveground pools with vinyl liner, check the interior of your pool carefully. If pool vinyl liner is brittle, stone, roots or metal corrosion are in contact with the underside of the liner, or there is damage to the base material or supporting walls, DO NOT use Zorba™ before necessary repairs are done by a qualified professional.

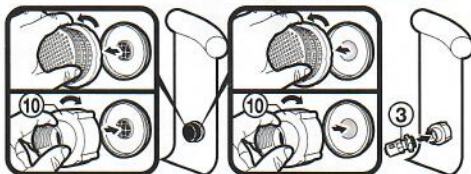
Installation of Pool Wall Adaptor on Return Inlet/ Wall Strainer

WARNING!
 TURN OFF THE PUMP BEFORE INSTALLATION.
 WATER PRESSURE FROM POOL RETURN INLET CAN BE DANGEROUS!

1. Remove the pool return fitting by unscrewing the retaining cap and eyeball. (Fig.1)
 DO NOT remove or loosen the wall fitting.
2. For 1½" pool return female fitting, screw the wall adaptor to it. (Fig.2)
3. For 1½" pool return male fitting, unscrew the cover ring, eyeball & base, and then screw the wall adaptor to it. (Fig.3)
4. For 2" pool return male fitting, unscrew the male adaptor from the hose adaptor and then screw the wall adaptor to it. (Fig.4)

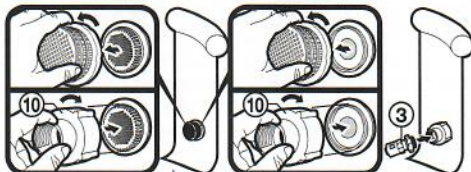
5. For Ø80mm (3") Wall Strainer

- Unscrew the wall strainer grid cover.
- Screw the connector on the strainer.
- Screw the wall adaptor into the connector as far as possible.



6. For Ø110mm (4 1/8") Strainer

- Unscrew the wall strainer grid cover.
- Screw the connector onto the middle thread of the strainer.
- Screw the wall adaptor into the connector as far as possible.



NOTE:

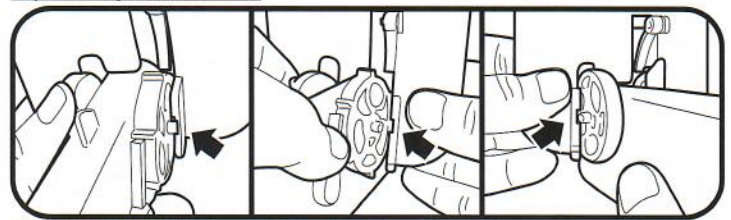
- To ensure sufficient flow, make sure to close other return inlet(s) with the cover plate provided.
- Close the main drain

Water Jet Nozzle assembly to the Cleaner

Align the rib on the jet nozzle opening to the notch on the cleaner's extension, and then slide the jet nozzle completely onto the extension.



Flap Assembly to the Jet Nozzle



Place the flap close to the driving wheels on the jet nozzle as shown. Pry and snap first bracket of flap (float side) onto the axle of the jet nozzle. Pry and snap the other bracket on the other end of axle. Shake the jet nozzle to check if the flap and wheels rotate smoothly.

Wheel Assembly to the Cleaner

Insert the pivot axle into the hole as shown until it stops and is securely in place. Assemble all wheels and make sure every wheel can rotate freely.

Wheel Height Adjustment

Adjustable height wheels on Zorba™ allow you to adjust the clearance underneath the cleaner for each pool's conditions. Suction will increase when the clearance is reduced.

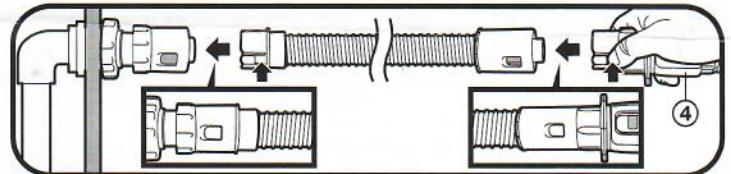
There are 3 holes on the wheel bracket for height adjustment. Wheel axle on hole #3 brings the cleaner bottom closest to the pool surface, while hole #1 provides maximum clearance.

To adjust the wheel location, pull to open the wheel bracket and release the wheel axle. Move wheel to the desired hole. Release the bracket to secure the wheel is in position.

NOTE: Cleaner may slow down if its bottom is too close to the pool surface and water flow is too high. In this case, adjust the wheel to increase clearance or reduce the water flow using the flow regulator.

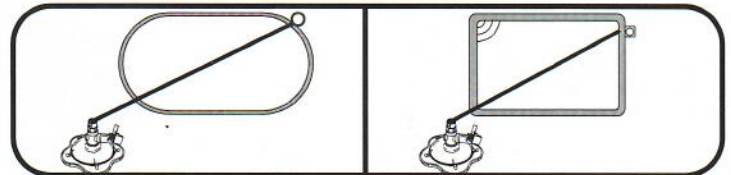
Flow Regulator Assembly

After fixing the wall adaptor to the return inlet/wall strainer, connect one of the long hoses by snapping the side clip of the male end to the female end of the wall adaptor, and then connect the female end to the male end of the flow regulator. Make sure the tab on the clip is securely locked in the notch of the female end.



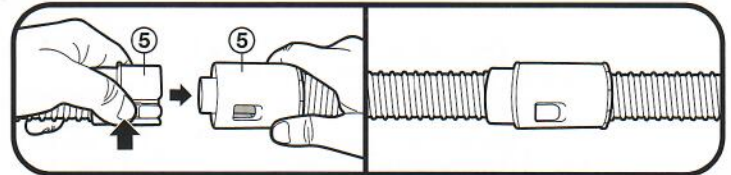
Hose Assembly

First, lay down all hose sections on the ground under sunlight for about an hour to remove hose memory.
 Second, measure your pool to figure out total length of hose needed for Zorba™ operation. Total length of hose after assembly should be half to one hose section length longer than the length measured from return inlet to the farthest point in the pool.

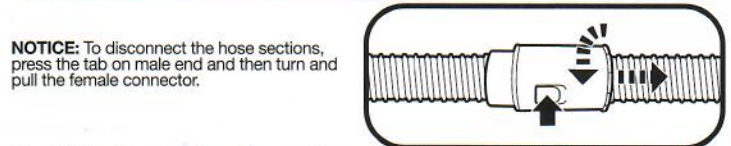


To connect the hose sections, press and snap the clip of the male end of each hose section to the female end of the next hose section. Make sure the tab on each clip is securely locked in the notch of each female end.

Note: It is normal that the hoses bleed water at each connection.



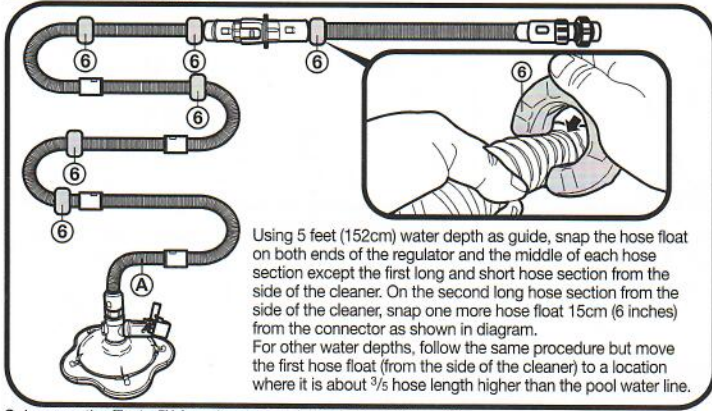
NOTICE: To disconnect the hose sections, press the tab on male end and then turn and pull the female connector.



After finishing the connection of hose sections, connect the open end of the last long hose to the flow regulator and then the open end of short hose to the Zorba™ as shown.



Hose & Hose Float Position

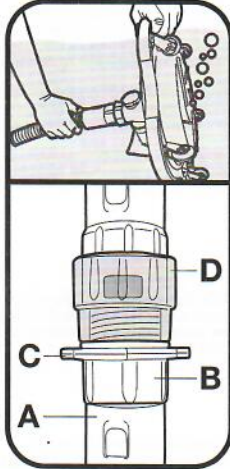


Using 5 feet (152cm) water depth as guide, snap the hose float on both ends of the regulator and the middle of each hose section except the first long and short hose section from the side of the cleaner. On the second long hose section from the side of the cleaner, snap one more hose float 15cm (6 inches) from the connector as shown in diagram.
For other water depths, follow the same procedure but move the first hose float (from the side of the cleaner) to a location where it is about 3/5 hose length higher than the pool water line.

Submerge the Zorba™ from its side and wiggle it until the air is evacuated and bubbles cease. Then lower the Zorba™ to the bottom of the pool.

Disassembly of the flap and side wheels from the jet nozzle

Note: This is not recommended to do unless the wheels do not rotate smoothly for example due to blockage by the debris or if the assembly is loosened accidentally.
Reverse the assembly steps of the flap to detach it from the nozzle. Disassemble one of the side wheels by pulling them directly from the axle and then take the other wheel out together with the axle from the nozzle. To reassemble back the wheels, reverse the steps and make sure the recess face of wheels face outwards and the wheel with gears is placed on the side of nozzle that the lever is located.



Flow Regulator Set up and Operation

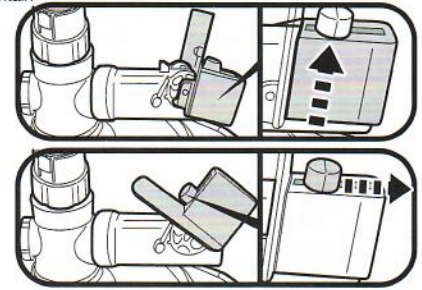
- Turn OFF the pump before adjusting the flow regulator.
- Turn the female hose connector "A" until the Flow Regulator opening underneath the transparent sleeve "D" faces upward.
 - Rotate the lock ring "C" leftward until it reaches the male hose connector "B".
 - Hold the male hose connector "B" and turn the transparent sleeve "D" rightward to increase the flow to the cleaner (you can see the opening is covered more by the lower part of the sleeve) or leftward to decrease the flow to the cleaner.
- NOTE:** It is recommended to adjust the flow regulator opening to half-open position initially.
- Rotate the lock ring "C" rightward until it reaches the transparent sleeve "D" in order to secure the sleeve position.
 - Place the Flow Regulator back to the pool.
 - Turn on the pump.

Refer to Trouble shooting for situations that require flow adjustment using the Flow Regulator.

Adjustment of the Rudder and Flap Movement

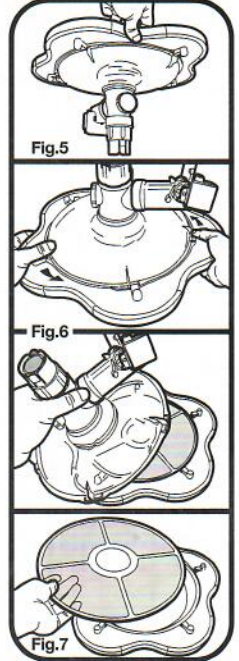
NOTE: It is recommended that the adjustment knob be set initially close to the flap. The purpose of this adjustment is to maintain proper movement of the flap.

- If the flap does not pivot forward when cleaner stops in front of a pool wall / obstacle, move the rectangular box (behind the flap) upward.
- If the flap does not lift upward when the Zorba™ is free to move forward, move the adjustment knob backwards.



How to clean the filter

- Turn OFF the pump.
- Lift the cleaner from the pool and disconnect it from the hose.
- Turn the cleaner up side down to drain the water through the jet nozzle. (Fig. 5)
- Place the cleaner on a level surface.
- Turn the round top cover by pushing the tabs on its side until the tabs are released from the slots on the lower body. Lift up the cover. (Fig 6)
- Lift out the round filter screen. (Fig.7)
- Empty the debris inside the lower body and rinse it with water.
- Reverse above steps to reassemble the cleaner.



Trouble Shooting - Turn off the PUMP before performing any repairs.

Problem	Possible Cause	Solution
THE POOL CLEANER DOES NOT MOVE	The pump may be turned off	Make sure the pump is ON.
	The pump may not be primed	Make sure the pump is primed and check for leaks in the system.
	There could be a problem or obstruction somewhere in the system	Clean and backwash the filter, clean the pump basket, make sure the vacuum hose is free from debris and leaks, check if pump impeller is blocked (see pump manual). Make sure to remove the cleaner before backwashing.
	Cleaner transparent cover tab detached from the slot on the lower body	Secure the cover to the lower body per instruction. If the slot is damaged, replace a new lower body if necessary.
	Not enough flow to the cleaner	Make sure that your pool pump power is at least 0.75HP (560W). Adjust the flow regulator to release more flow. If situation persists, you may have to close off one or all of the other returns with the eyeballs that restrict flow.
THE POOL CLEANER MOVES TOO SLOWLY	There could be a problem or obstruction somewhere in the system	Make sure that your pool pump power is at least 0.75HP (560W). Clean and backwash the filter, clean the pump basket, make sure the vacuum hose is free from debris and leaks, check if pump impeller is blocked (see pump manual). Check if hoses are leaking. Make sure to remove the cleaner before backwashing.
	Not enough flow to the cleaner	Make sure that your pool pump power is at least 0.75HP (560W). Adjust the flow regulator to release more flow. If situation persists, you may have to close off one or more of the other returns with eyeballs that restrict flow.
	The hoses may be leaking	Make sure the hoses are snapped together properly and have no punctures. It is normal that the hoses bleed water at each connection.
THE POOL CLEANER DOES NOT CLEAN THE ENTIRE POOL	The hose is too short	The hoses must be half to one length longer than the farthest point of the pool.
	The float may be in the wrong position	Make sure the hose floats are in position per diagram shown in this manual. If situation persists, slide the floats backward or forward along the hoses.
	The hoses may not be properly connected	Make sure the hoses are snapped together properly. It is normal that the hoses bleed water at each connection.
	The filter compartment may be full with debris	Clean it before it gets too full.
	Wheel may be jammed by debris	Check and clean out any debris that obstructs the movement of the wheel.
	The jet nozzle is blocked by debris	Check and clean out any debris that obstructs the movement of the jet nozzle.
	There are loops in the hoses	Lay hose sections straight in the sunlight for a few hours to make them straight. Interchange the position of the hoses.
POOR DEBRIS PICK-UP	The filter compartment may be full with debris	Clean the filter compartment.
	Not enough flow to the cleaner	Make sure that your pool pump power is at least 0.75HP (560W). Adjust the flow regulator to release more flow. If situation persists, you may have to close off one or all of the other returns with eyeballs that restrict flow.
	Distance between the bottom of the cleaner and the bottom of the pool is too big	Adjust the wheel position to reduce the clearance.
CLEANER TURNS OVER	Air is trapped in the cleaner	Take out the cleaner and submerge it again in the pool by tilting the head on its side until bubbles are totally removed.
	Hose is too short	Make sure the hoses are half to one length longer than the farthest point of the pool.
	Cleaner moves too fast	Adjust the flow regulator to reduce the water flow to the cleaner.
	Floats are not in proper locations	Make sure hose floats are in proper locations. If problem persists, take out the first hose float on the long section (from the side of the cleaner)
THE CLEANER REMAINS STUCK IN ONE LOCATION	Jet nozzle is not rotating	Check if the flap pivots forward when stopped in front of the pool wall / obstacle and frees the opening of the side jet. If not, move the adjustment box (behind the flap) upward. If problem still persists, go to "Jet Nozzle Inspection". Note: After adjustment, pivot the flap forward and backward a few times before putting the cleaner back to the pool. Check if the cleaner transparent cover tab is detached from the slot on the lower body. Secure the cover to the lower body per instruction. If the slot is damaged, replace a new lower body if necessary. Jet Nozzle Inspection: Check if the wheels on nozzle side are blocked by debris, and clean out the debris. Check if the side flexible stick bends too much so that it cannot stop the wheel rotating reversely. If necessary, bend the stick in direction opposite to its bending direction. Check if any moving part is damaged, replace the whole jet nozzle if necessary.
	Not enough flow to the cleaner	Adjust the flow regulator to release more flow. If the situation persists, you may have to close off one or all of the other returns with eyeballs that restrict flow.
	The jet nozzle is constantly rotating	Check if the flap pivots upward and blocks the side jet when the cleaner moves. If not, move the adjustment knob backwards. If problem still persists, go to "Jet Nozzle Inspection".